

# THIRD STREET PEDESTRIAN BRIDGE



---

# AGENDA

- Welcome/Meeting Goals
- History of the Project
- Introduction to the Concept
- Hearing from You
- Report Back
- What Did We Miss?
- Next Steps

## MEETING GOALS

- Understand the project history
- Understand the project parts
- Understand the project timeline
- Review concepts and get YOUR feedback



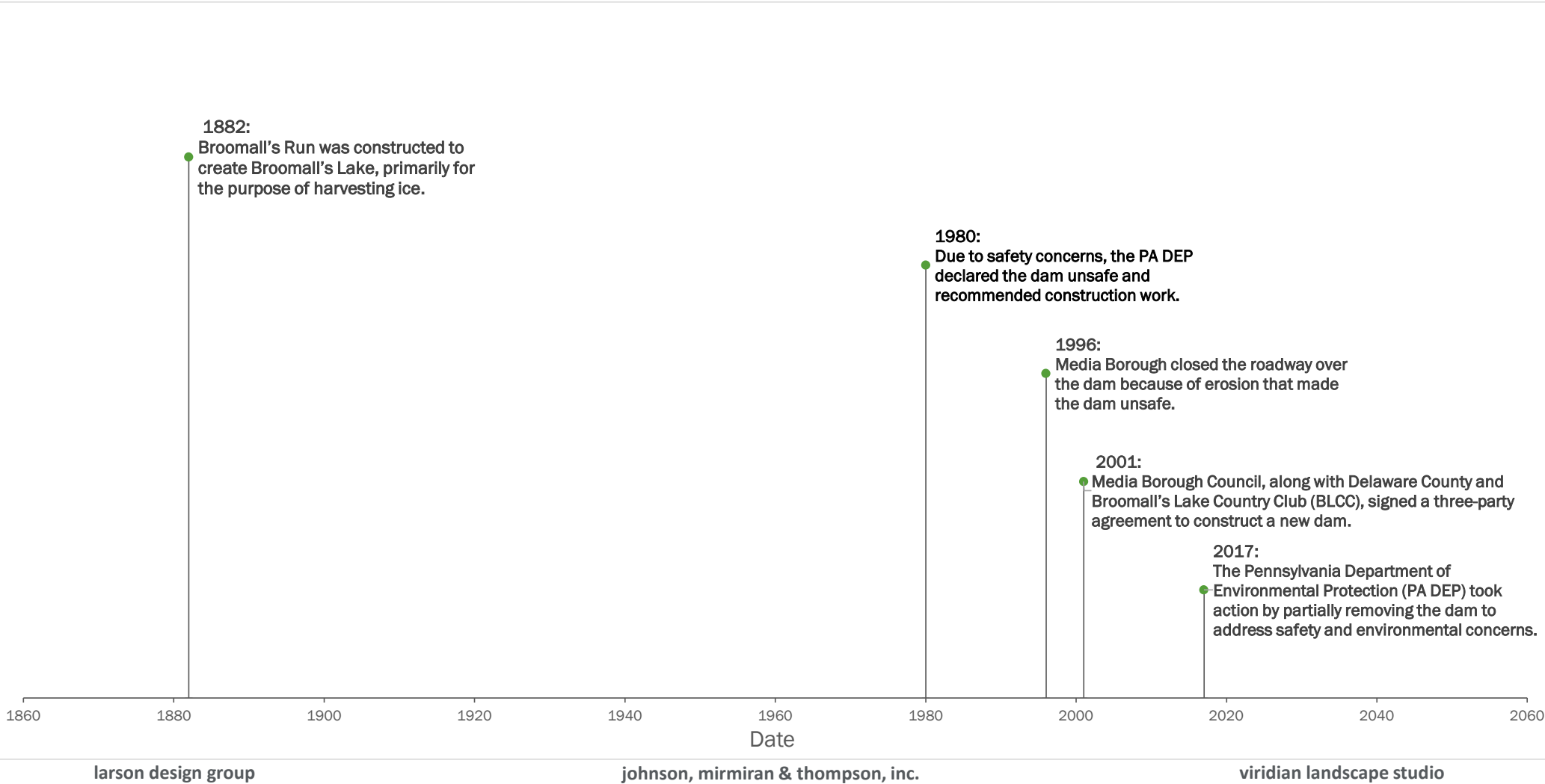
larson design group



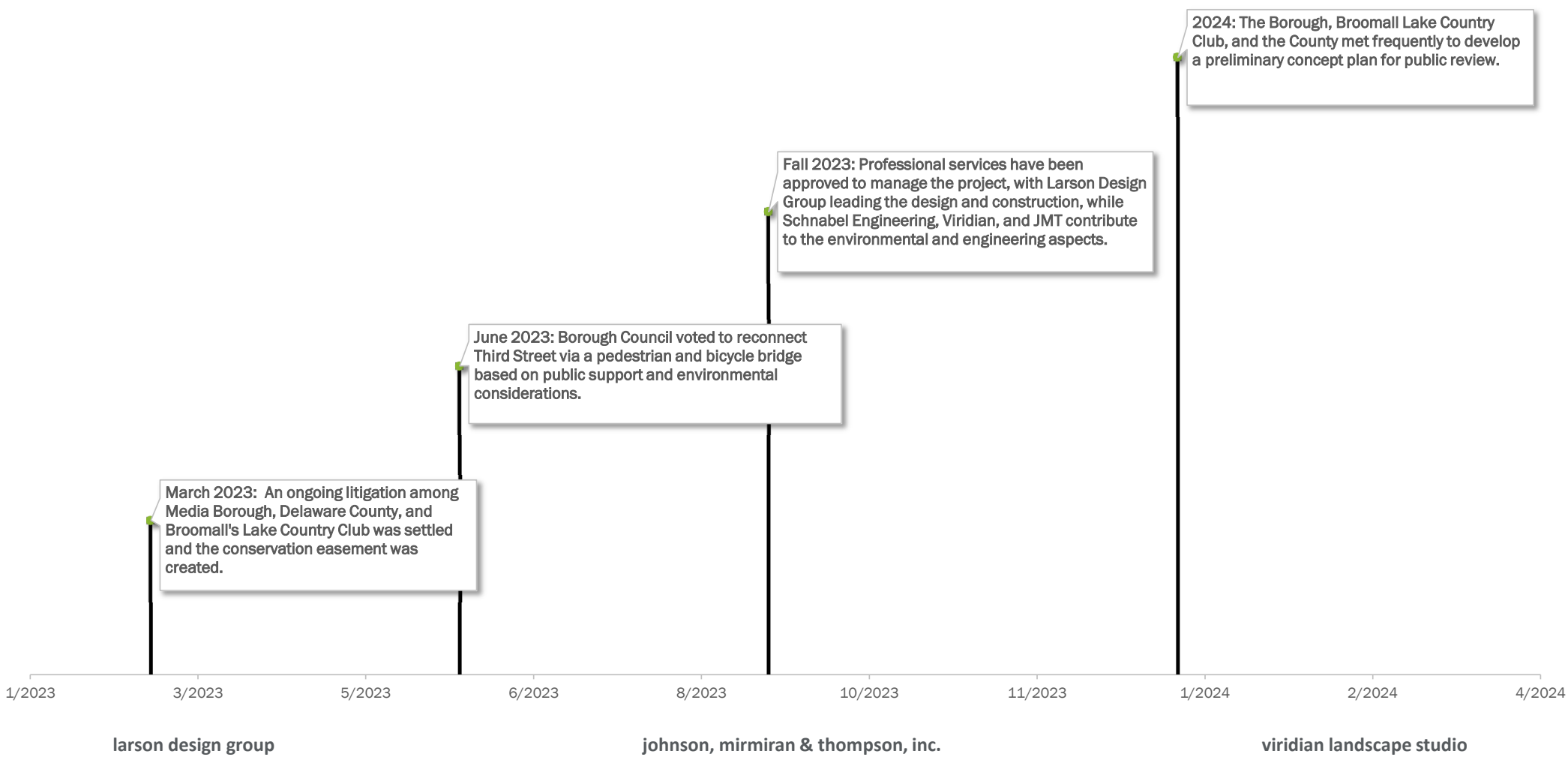
johnson, mirmiran & thompson, inc.

viridian landscape studio

# PROJECT HISTORY



# PROJECT HISTORY: LAST THREE YEARS



# PROJECT BRIEF

Project includes:

- Full dam breach – Required by PA DEP
- Restoration and stabilization of the stream within the former lakebed.
- Restoration of Club access across the stream
- Construction of a pedestrian and bicycle bridge.
- Convert 3rd Street to a Shared Use Path – Between West Street and Upper Providence Township
- Stormwater improvements to reduce erosion and improve water quality.



---

## REMINDER: REGULATORY REQUIREMENTS

- PA DEP requires that a full dam breach be completed, and that the lakebed be restored with a stabilized stream corridor.
- Stream and floodplain restoration will be completed upstream and through the dam area. PA DEP will review and approve the proposed project via the Dam Removal Waiver that will be prepared by the design team.
- Erosion and Sediment Control will be required during construction.
- An Environmental Document will be prepared. Approval PennDOT & FHWA is required to advance the project into Final Design.

# CONSERVATION EASEMENT

EXISTING SITE



— · — Conservation easement

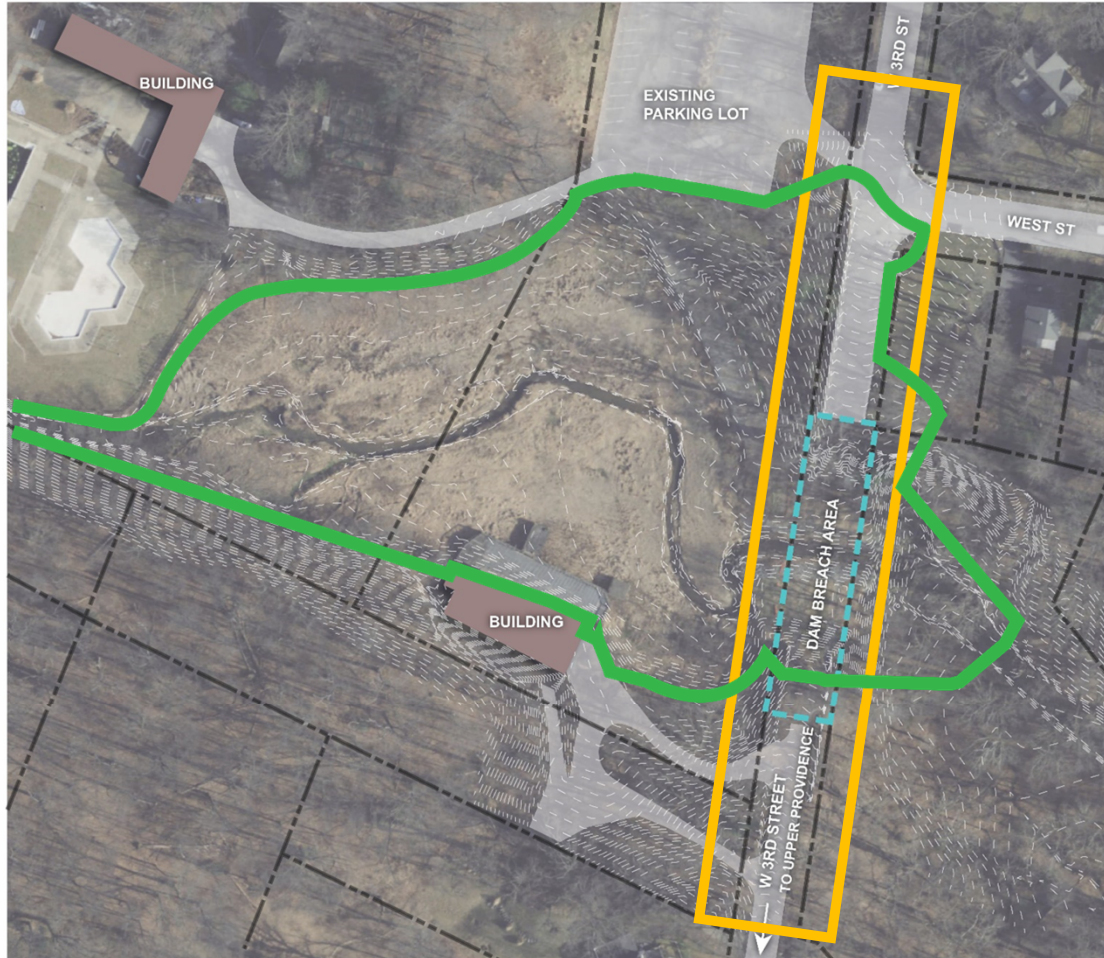
larson design group

johnson, mirmiran & thompson, inc.

viridian landscape studio

# THE PROJECTS

## SITE PLAN



larson design group

johnson, mirmiran & thompson, inc.

viridian landscape studio

- Stream Restoration & Crossing
- Bridge

---

## CONCEPT




# CONCEPT

## SITE PLAN: ALL PROJECTS



### LEGEND

-  EXISTING TREE CANOPY  
*ESTIMATED TO REMAIN*
-  REVEGETATED AREA  
*TREES, SHRUBS, GROUNDCOVER*
-  WETLAND  
*RESTORED FLOODPLAIN*
-  STREAM  
*RESTORED STREAM CHANNEL*
-  RAIN GARDEN
-  BRIDGE
-  PATH
-  GATHERING SPACE



larson design group

johnson, mirmiran & thompson, inc.

viridian landscape studio

# CONCEPT

## SITE PLAN: ALL PROJECTS



- Stream Restoration & Crossing
- Bridge

larson design group

johnson, mirmiran & thompson, inc.

viridian landscape studio

# CONCEPT

## SITE PLAN: STREAM RESTORATION AND CROSSING PROJECT



### LEGEND

- EXISTING TREE CANOPY  
ESTIMATED TO REMAIN
- REVEGETATED AREA  
TREES, SHRUBS, GROUNDCOVER
- WETLAND  
RESTORED FLOODPLAIN
- STREAM  
RESTORED STREAM CHANNEL
- RAIN GARDEN
- BRIDGE
- PATH
- GATHERING SPACE

larson design group

johnson, mirmiran & thompson, inc.

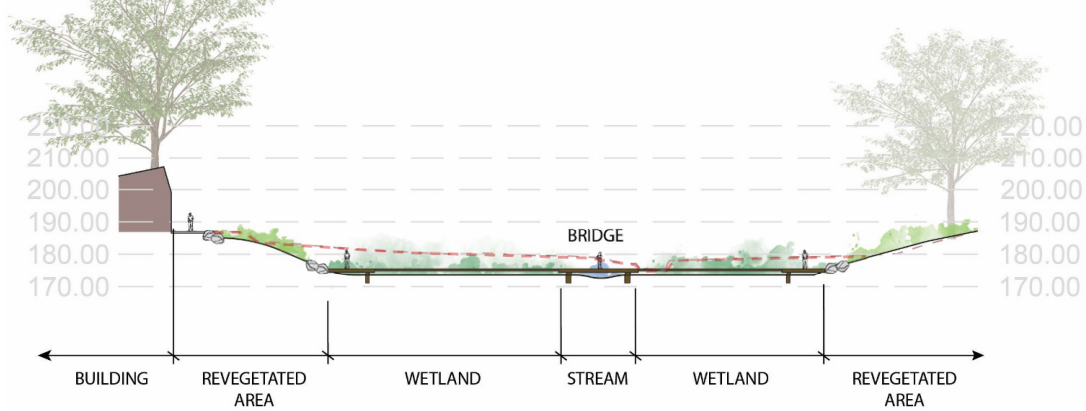
viridian landscape studio

# CONCEPT

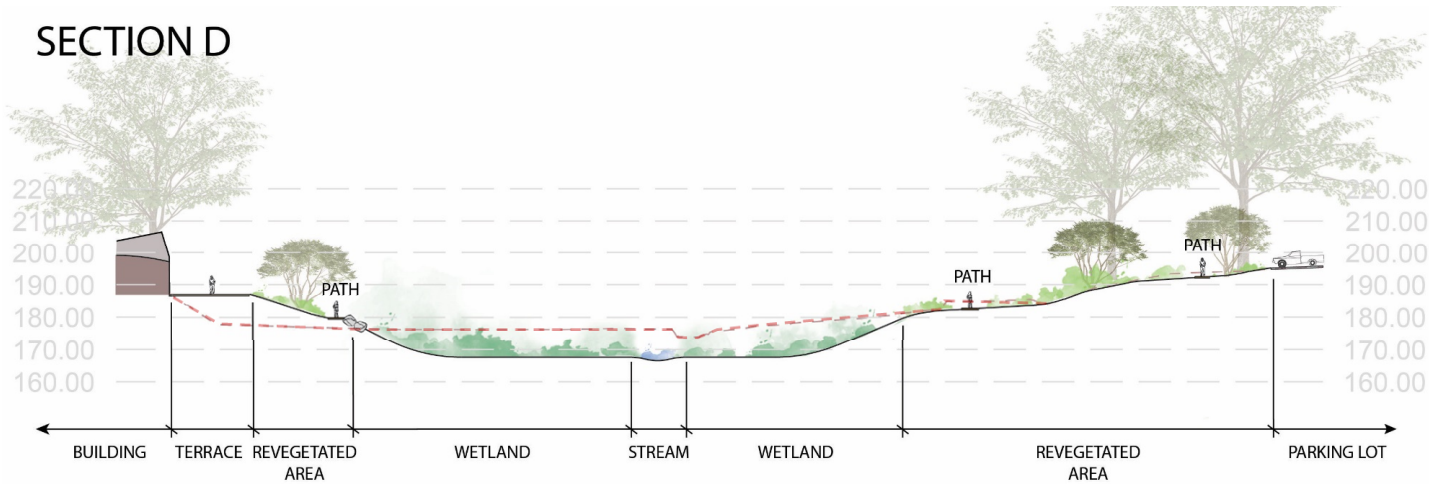
## SITE PLAN: STREAM RESTORATION AND CROSSING PROJECT



SECTION C



SECTION D



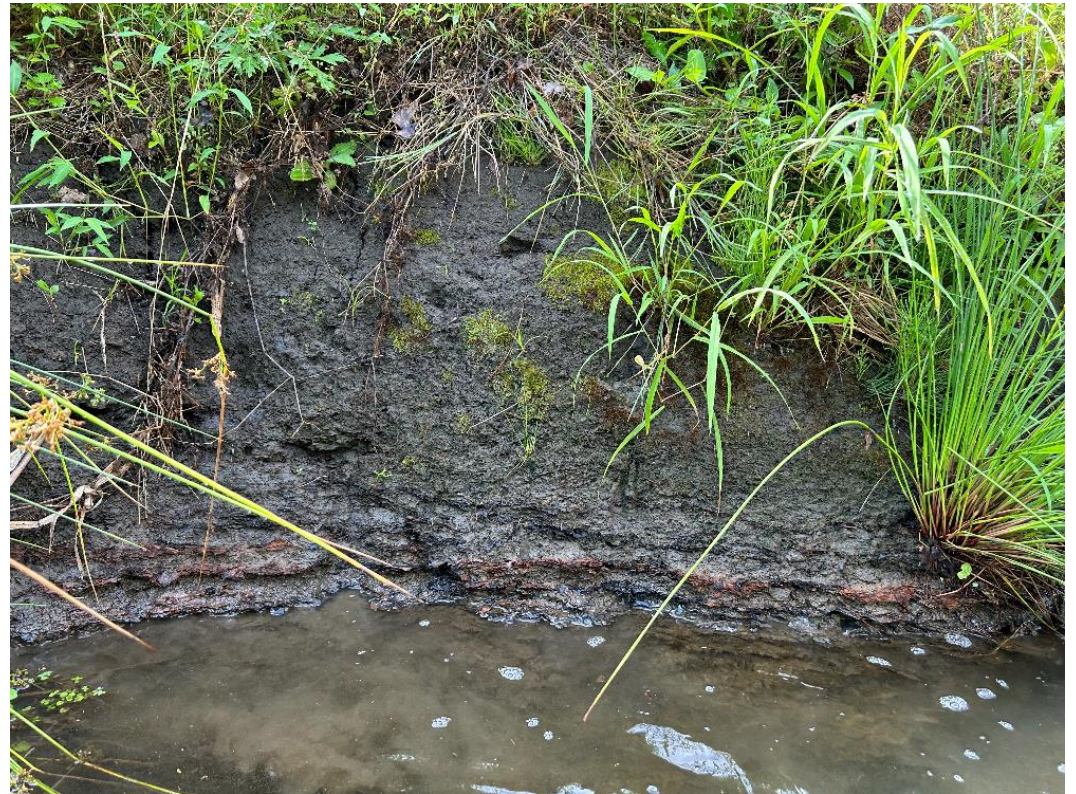
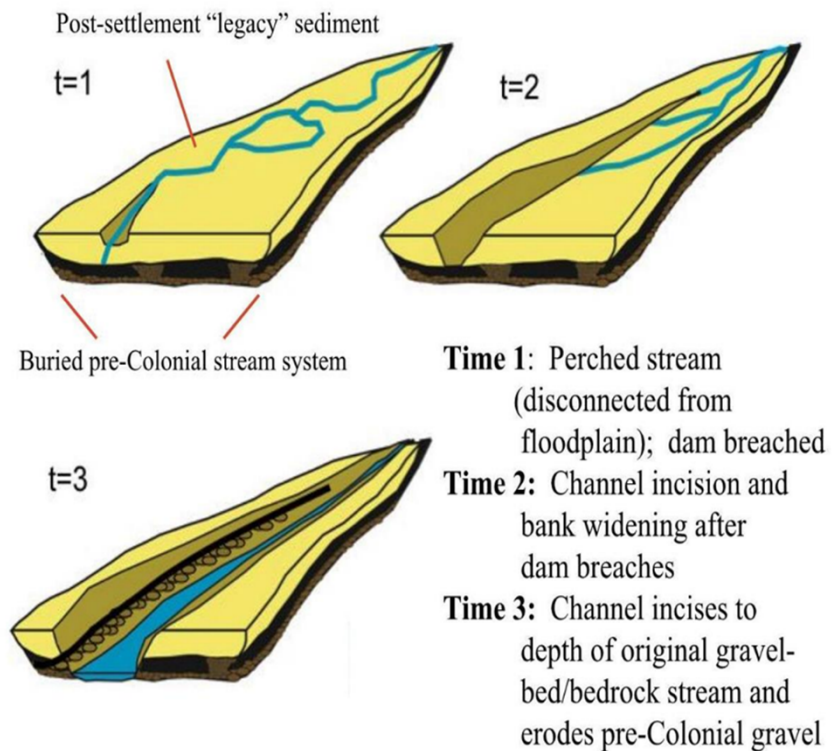
larson design group

johnson, mirmiran & thompson, inc.

viridian landscape studio

# STREAM RESTORATION

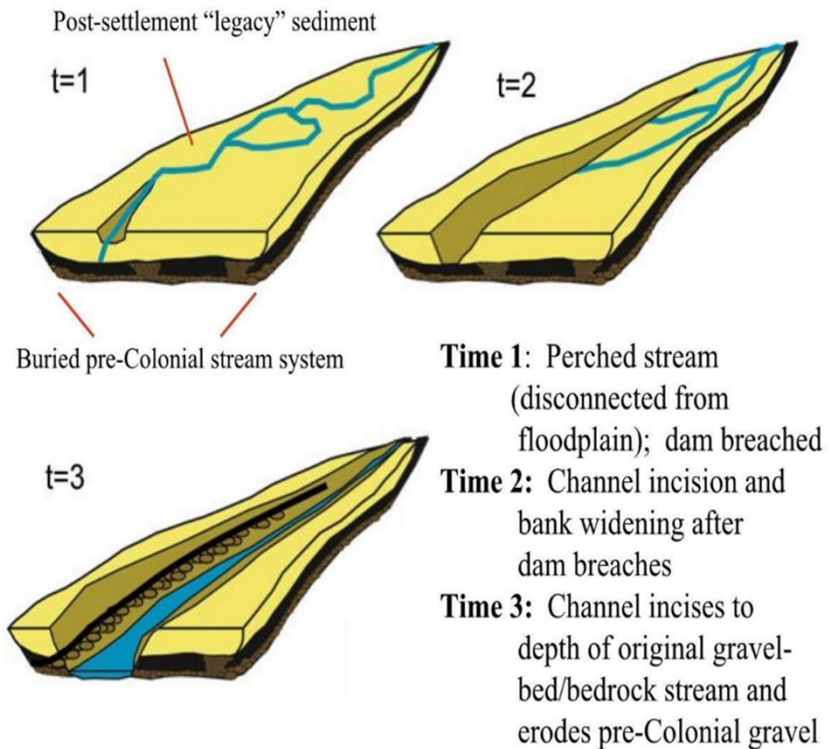
## LEGACY SEDIMENT



Source: Dave Rosgen

# STREAM RESTORATION

## LEGACY SEDIMENT

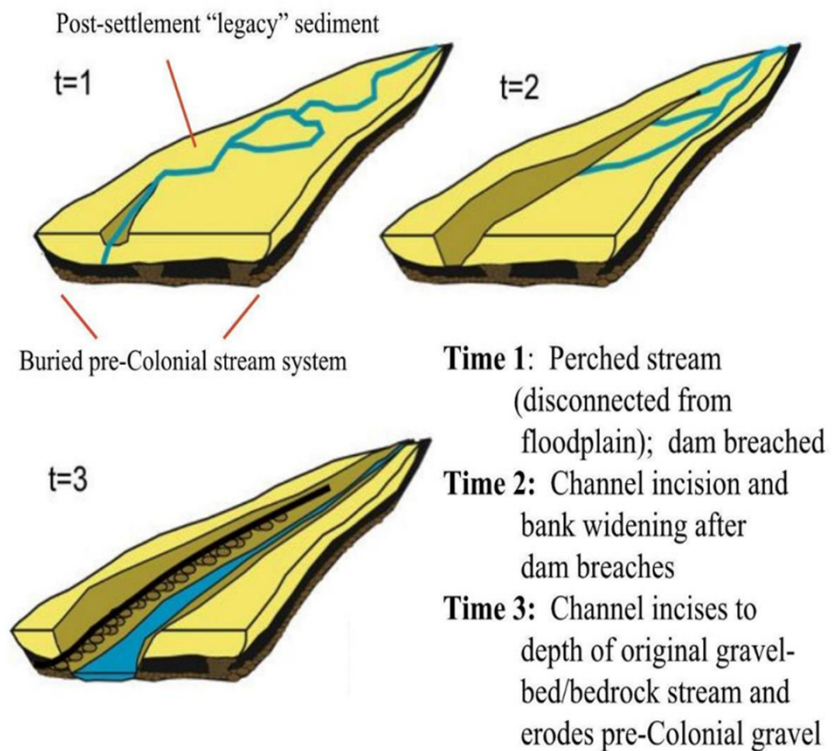


Source: Dave Rosgen



# STREAM RESTORATION

## LEGACY SEDIMENT

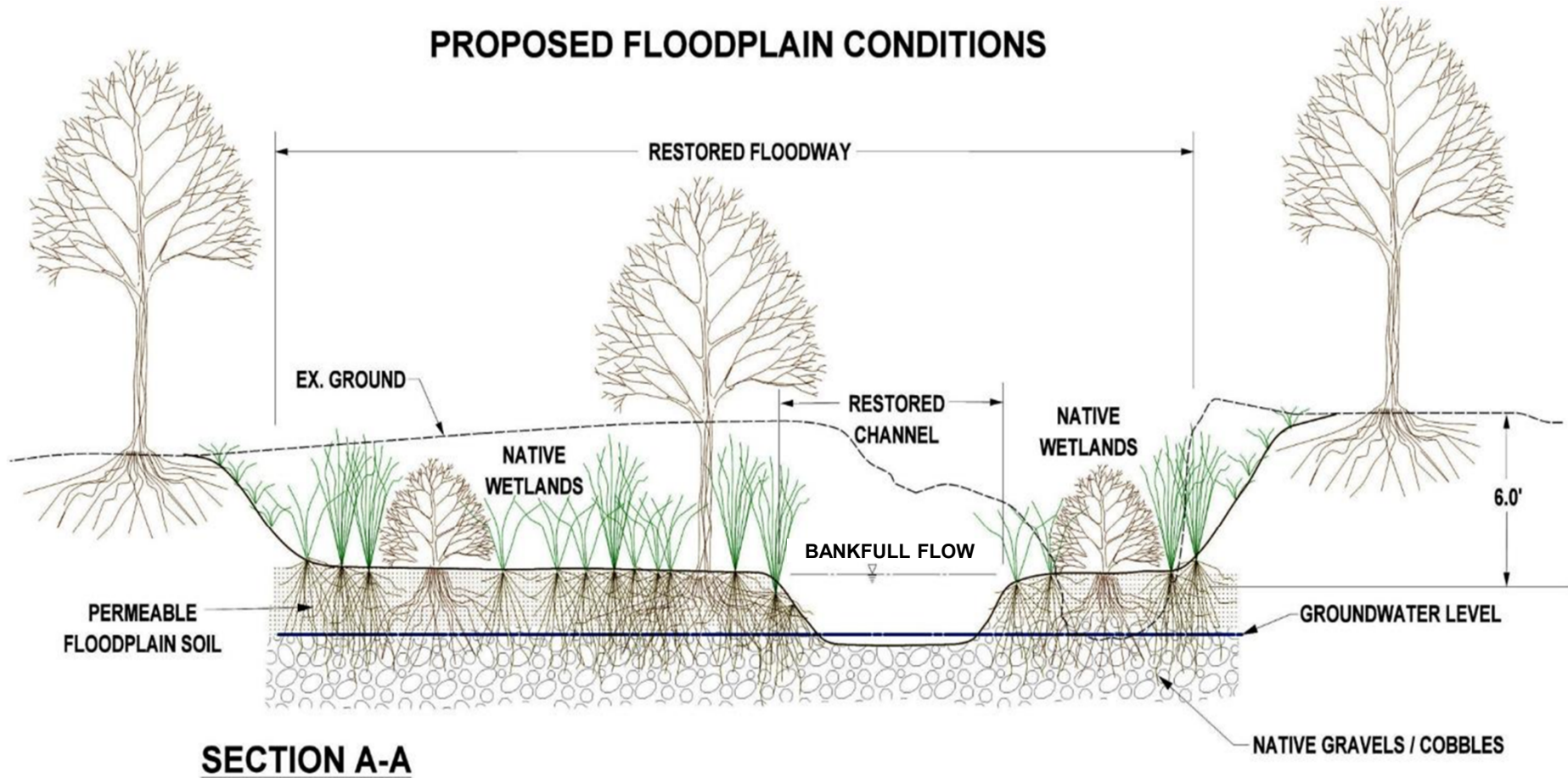


Source: Dave Rosgen

# STREAM RESTORATION

## DESIGN APPROACH

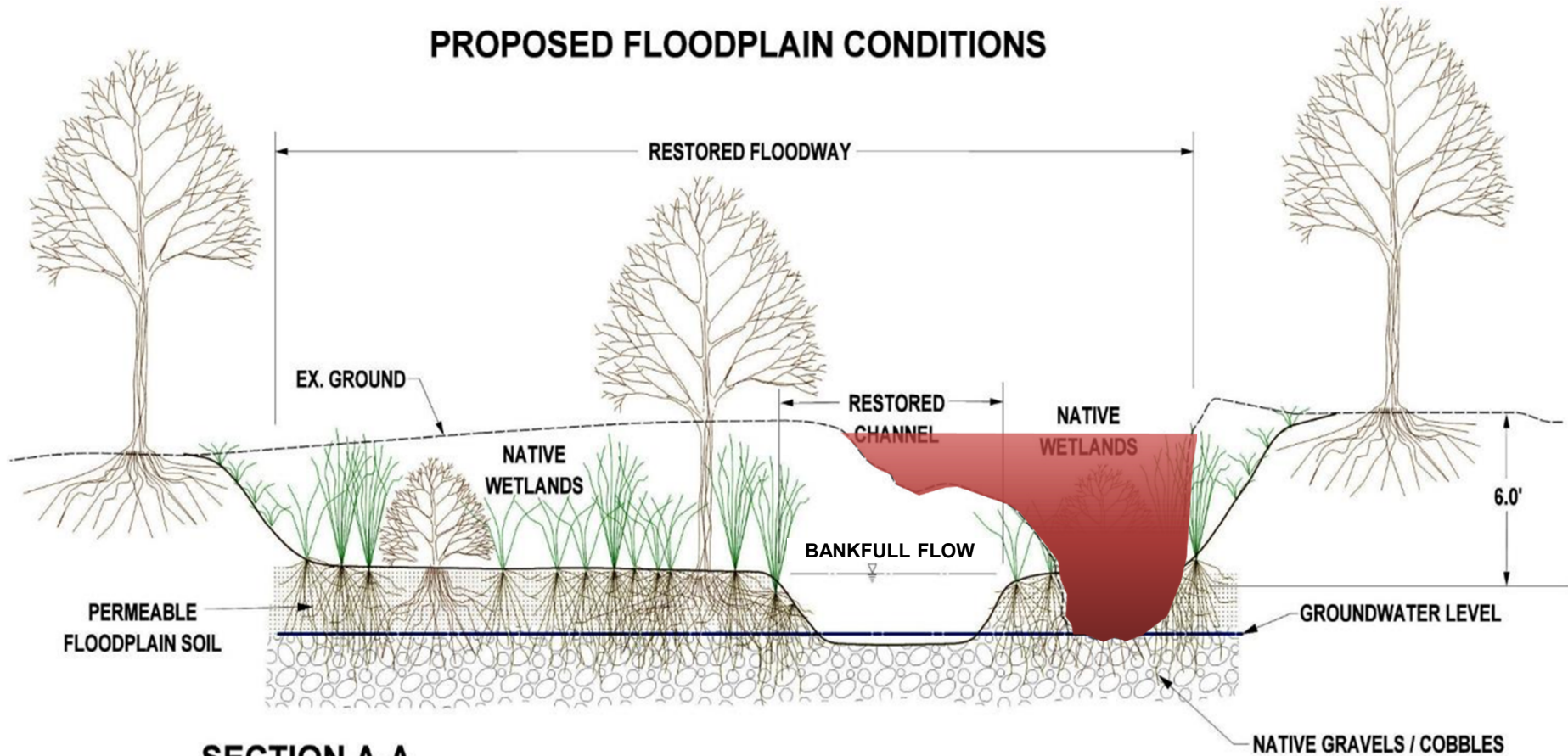
### PROPOSED FLOODPLAIN CONDITIONS



# STREAM RESTORATION

## DESIGN APPROACH

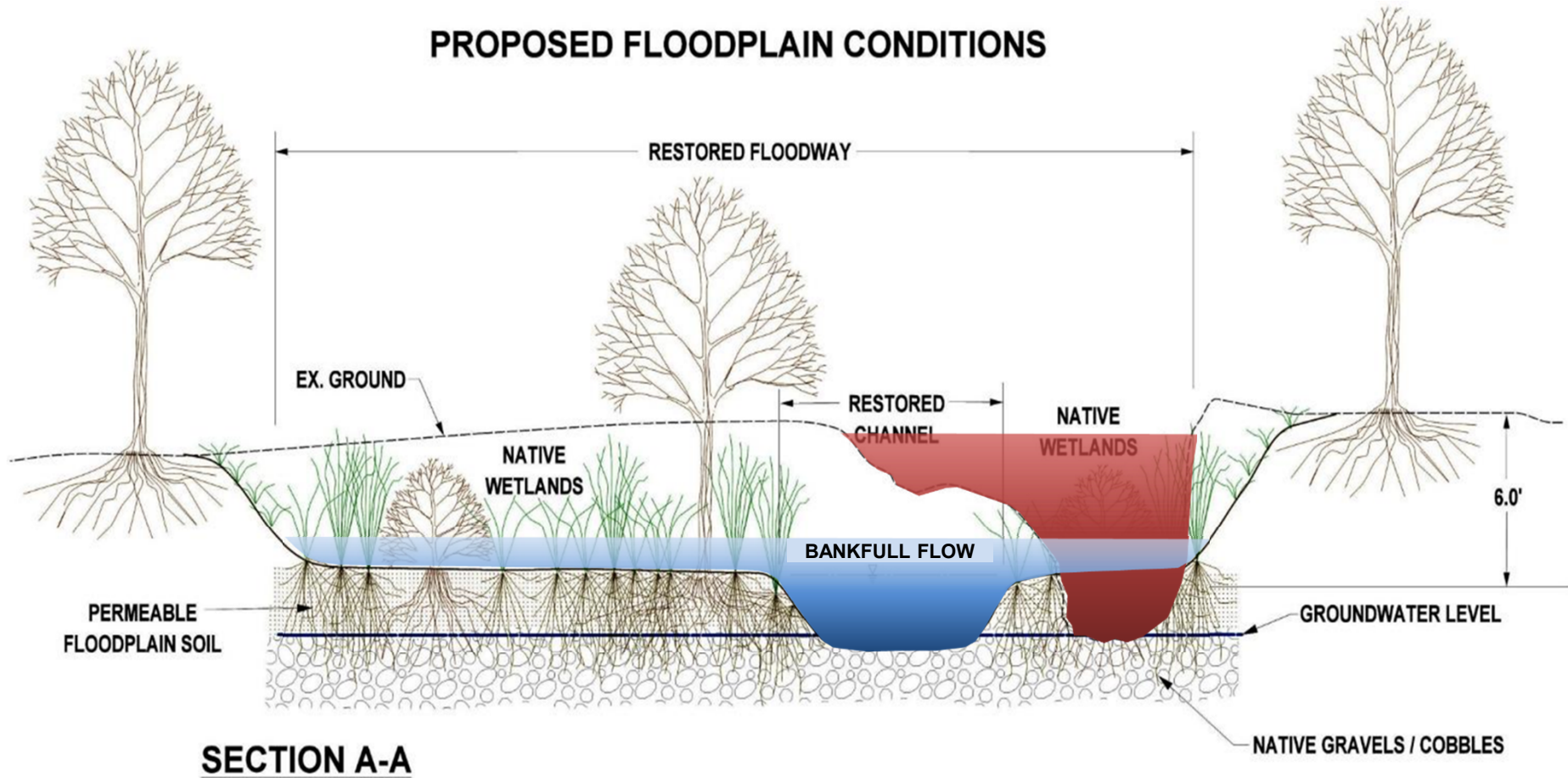
### PROPOSED FLOODPLAIN CONDITIONS



# STREAM RESTORATION

## DESIGN APPROACH

### PROPOSED FLOODPLAIN CONDITIONS



---

# STREAM RESTORATION

FLOODPLAIN RESTORATION EXAMPLE – BEFORE



larson design group

johnson, mirmiran & thompson, inc.

viridian landscape studio

---

# STREAM RESTORATION

FLOODPLAIN RESTORATION EXAMPLE – AFTER



larson design group

johnson, mirmiran & thompson, inc.

viridian landscape studio

---

# STREAM RESTORATION

FLOODPLAIN RESTORATION EXAMPLE - AFTER



larson design group

johnson, mirmiran & thompson, inc.

viridian landscape studio

---

# STREAM RESTORATION

FLOODPLAIN RESTORATION EXAMPLE - AFTER



larson design group

johnson, mirmiran & thompson, inc.

viridian landscape studio

# STREAM RESTORATION

## FLOODPLAIN RESTORATION EXAMPLE

### Stacked Benefits



Flood Reduction



Wetland  
Creation



Recreation



Flood  
Attenuation



Wildlife Habitat



Education



Groundwater  
Recharge



Aesthetic  
Enhancement



Reduced  
Maintenance



Water Quality



Invasive Species  
Removal

---

# STREAM RESTORATION

## STEP POOL EXAMPLE - BEFORE



larson design group

johnson, mirmiran & thompson, inc.

viridian landscape studio

---

# STREAM RESTORATION

## STEP POOL EXAMPLE – AFTER



Source: Wildland Hydrology

larson design group

johnson, mirmiran & thompson, inc.

viridian landscape studio

# CONCEPT

## SITE PLAN: 3<sup>RD</sup> STREET PEDESTRIAN BRIDGE



### LEGEND

- EXISTING TREE CANOPY  
*ESTIMATED TO REMAIN*
- REVEGETATED AREA  
*TREES, SHRUBS, GROUNDCOVER*
- WETLAND  
*RESTORED FLOODPLAIN*
- STREAM  
*RESTORED STREAM CHANNEL*
- RAIN GARDEN
- BRIDGE
- PATH
- GATHERING SPACE

larson design group

johnson, mirmiran & thompson, inc.

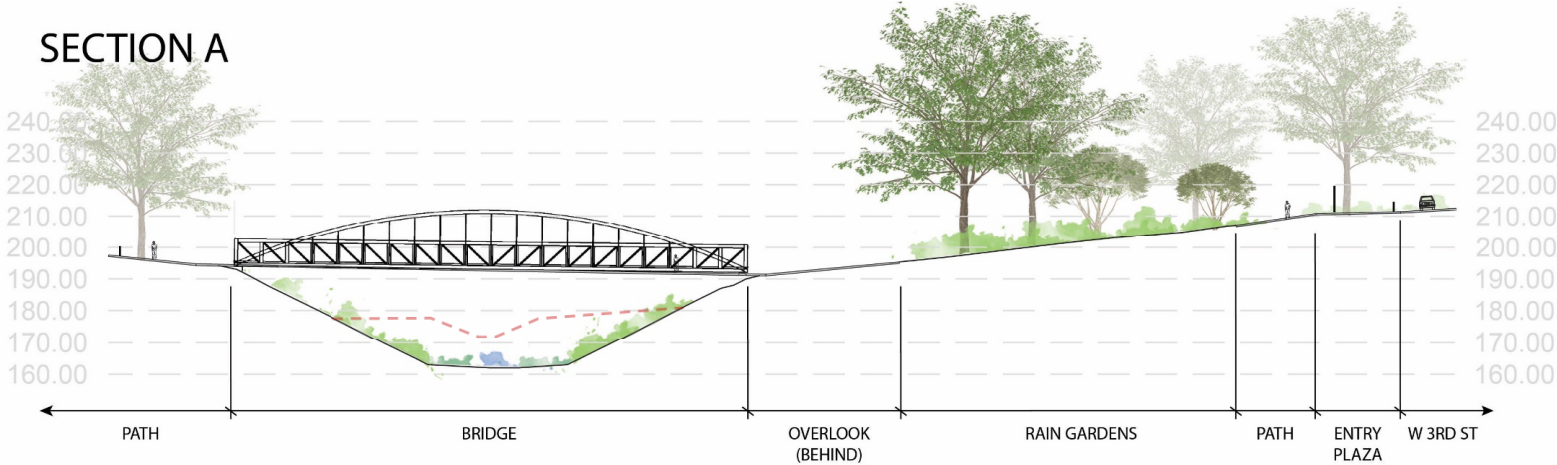
viridian landscape studio

# CONCEPT

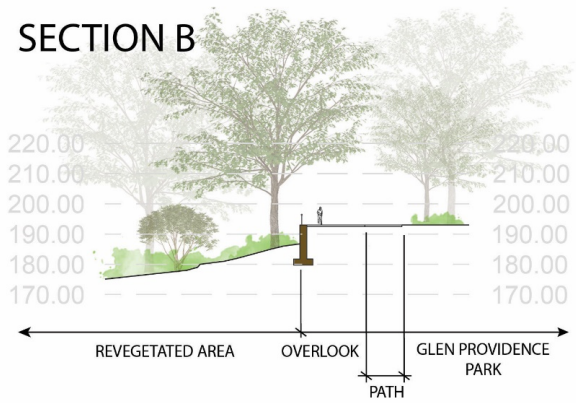
## SITE PLAN: 3<sup>RD</sup> STREET PEDESTRIAN BRIDGE



SECTION A



SECTION B



larson design group

johnson, mirmiran & thompson, inc.

viridian landscape studio

---

# PROJECT TIMELINE AND COSTS

## ESTIMATED COSTS AND FUNDING

- Estimated cost for construction and design - \$5.1M
  - PA Transportation Improvement Plan Grant - \$4.1M (secured)
  - RACP Grant - \$650,000 (secured)

## TIMELINE

- 12 to 18 months - Complete Preliminary Design
- 12 months - Complete Final Design and Permitting
- Estimate Fall 2027 Project Letting
- 12 to 18 months – Construction (Spring 2028 to Fall 2029)

---

# HEARING FROM YOU

- For the project to be a success it will?

---

# HEARING FROM YOU

- What are the most important project opportunities?
  - habitat creation?
  - great place to see and be seen?
  - a bridge!
  - a great bike connection?
  - lighted? Is it simple? funky? only for special occasions?

---

## HEARING FROM YOU

- What are the most important project opportunities?
  - habitat creation?
  - great place to see and be seen?
  - a bridge!
  - a great bike connection?
  - lighted? Is it simple? funky? only for special occasions?
- What are your favorite trails? What would you like to see from them here?

---

# HEARING FROM YOU

- What are the most important project opportunities?
  - habitat creation?
  - great place to see and be seen?
  - a bridge!
  - a great bike connection?
  - lighted? Is it simple? funky? only for special occasions?
- What are your favorite trails? What would you like to see from them here?
- What are your concerns?
  - environmental?
  - bike access?

# PRECEDENT IMAGES

MEDIA, PA



Sandy Bank Burial Ground



Sidewalk mosaic



114 East State Street



Glen Providence Park  
larson design group

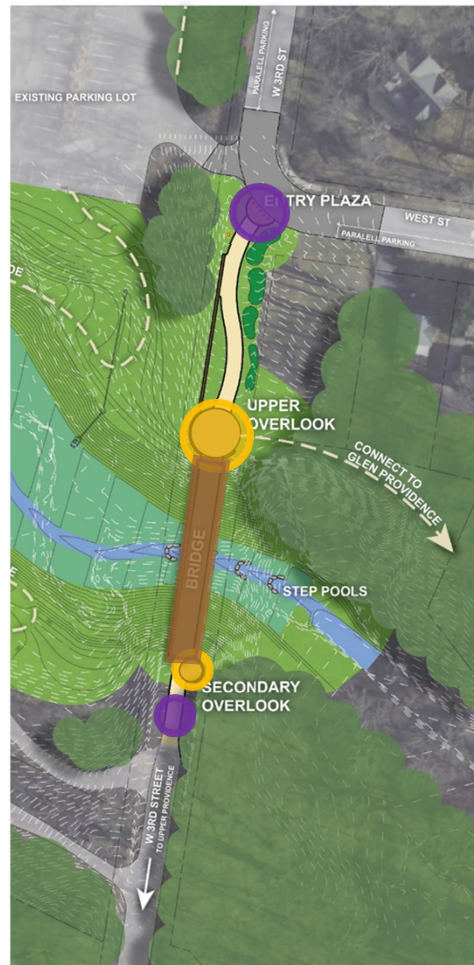


Glen Providence Park  
johnson, mirmiran & thompson, inc.

viridian landscape studio

# HEARING FROM YOU

- What is the look/feel of the 3<sup>rd</sup> Street Bridge project?



# WHAT DID WE MISS?



larson design group

johnson, mirmiran & thompson, inc.

viridian landscape studio

---

## NEXT STEPS

- Determine Environmental Footprint
- Hold Environmental Scoping field view with PennDOT staff
- Progress Preliminary Engineering Concept
  - Complete required preliminary engineering submissions to PennDOT.
- Hold a Pre-Application meeting with PA DEP and the Delaware County Conservation District.
  - Public Meeting #2
- Complete Environmental Document and Approval.
- After Environmental and Design Approval – Final Design, Plan and Specifications
- Build the 3<sup>rd</sup> Street Pedestrian Bridge project
- Make Memories using the 3<sup>rd</sup> Street Pedestrian Bridge